

MITCHELL HUMPHREY

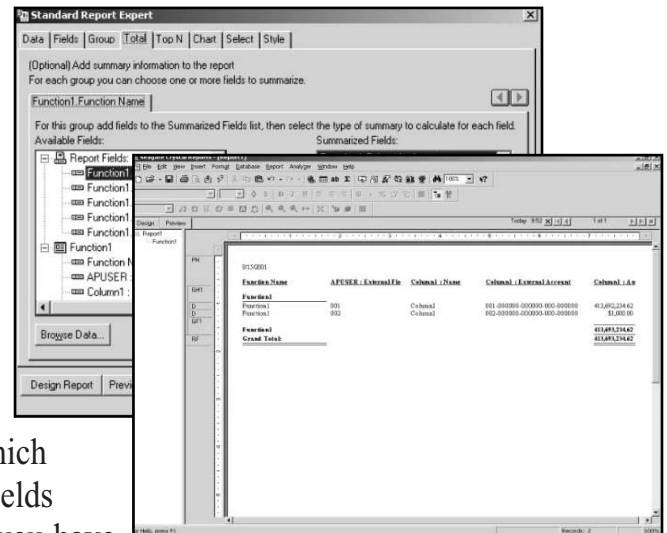
FMS-DataLink

Your Universal FMS II Information Gateway

FMS II

FMS-DataLink, from Mitchell Humphrey, provides your organization with direct access to FMS II Ledger data via a standard OLE-DB (universal data integration) interface. You're able to quickly and easily utilize a variety of reporting tools (Crystal Reports, Excel, etc.) to access and retrieve summarized FMS II Ledger data in a tabular format.

FMS-DataLink provides you with direct access to ledger information stored in FMS II via a user-friendly data solution tool. With FMS-DataLink, you simply click on the ledger (General Ledger, Job Costing, Accounts Payable, etc.) from which you wish to build your table, then select the appropriate data fields (Department, Account, Vendor, etc.) and time intervals. After you have made your selections, FMS-DataLink downloads your information to a tabular format while subjecting it to all standard FMS II security.



THE RIGHT SOLUTION FOR YOUR ORGANIZATION

No matter what industry you're in or what function you perform, FMS-DataLink can have a positive impact on time, money and decision making.

For more detailed information about how FMS-DataLink can meet your organization's needs both now and in the future, call (800) 237-0028 or e-mail us at sales@mitchellhumphrey.com.

We also invite you to learn more about Mitchell Humphrey and our FMS II suite of systems and services by visiting our web site at www.mitchellhumphrey.com.



11720 Borman Drive • St. Louis, Missouri • 63146
(800) 237-0028 • (314) 991-2440 • Fax: (314) 991-5288
www.mitchellhumphrey.com • sales@mitchellhumphrey.com

business partner



Microsoft
CERTIFIED
Partner